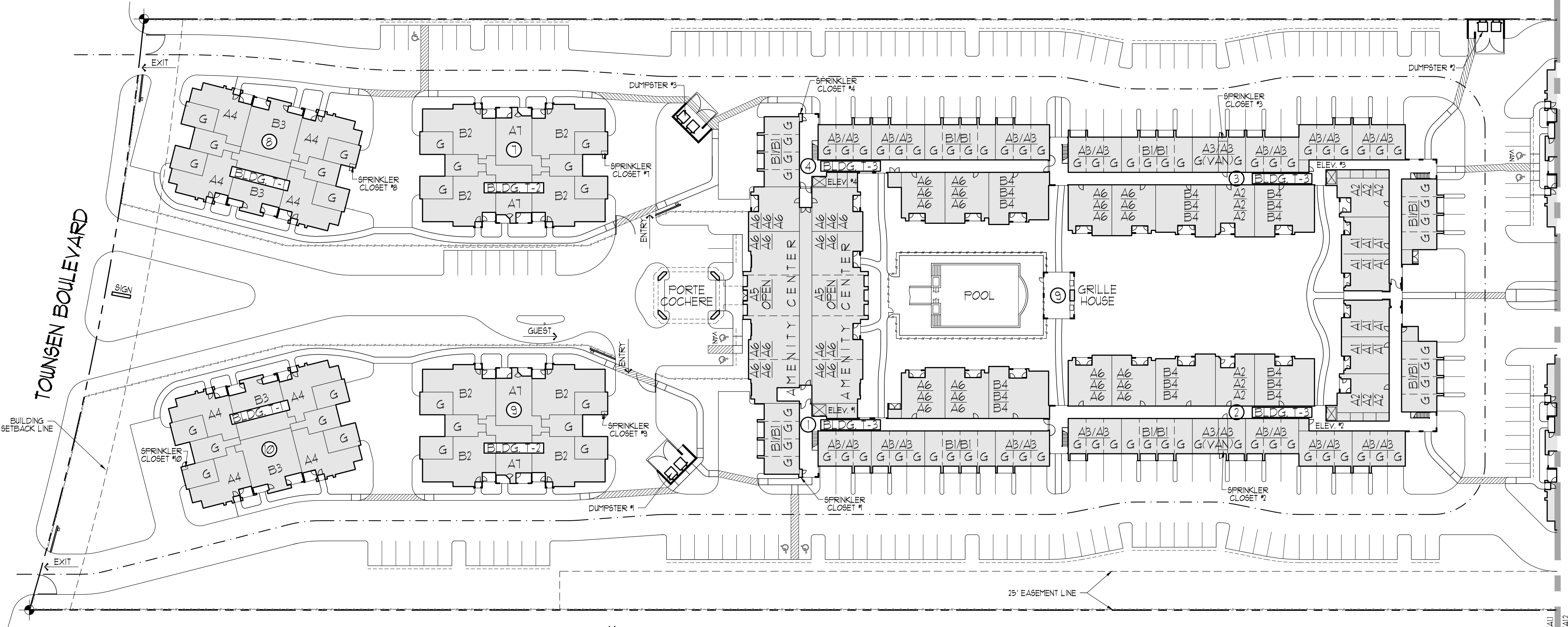


MUCASEY & Associates
Architects

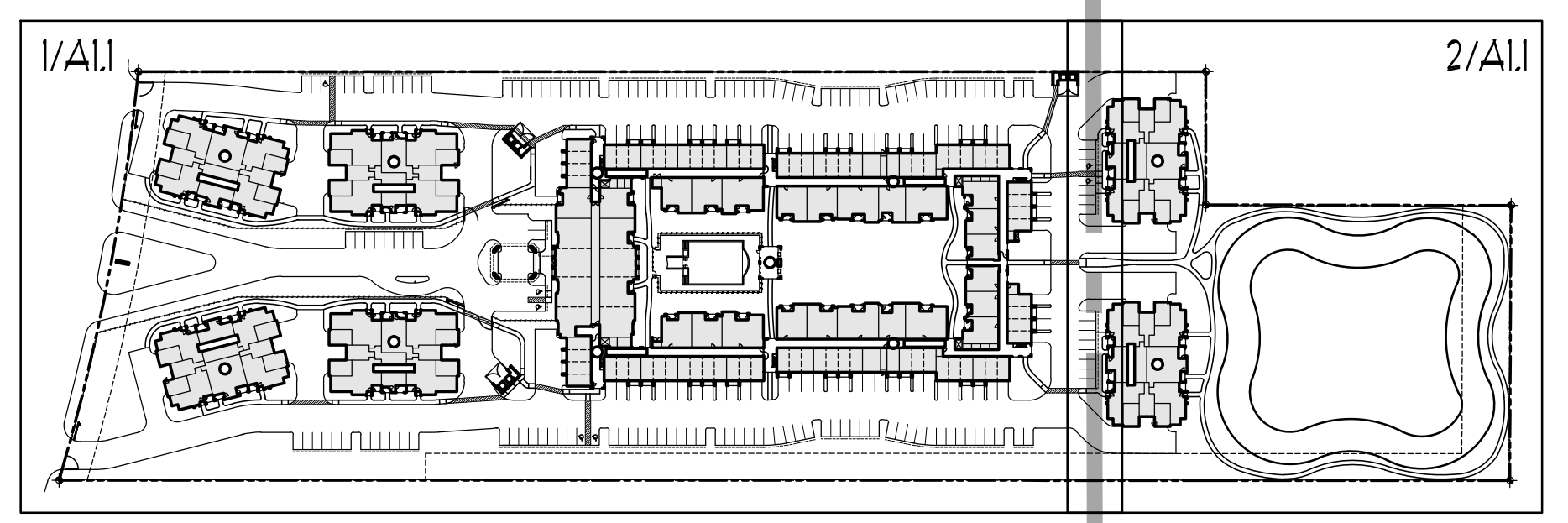
4808 Gibson, Suite 200
Houston, Texas 77007
Tel. (713) 521-1233
Fax (713) 520-1904
Email: office@mucaseyarchitects.com

TOWNSEN SENIORS

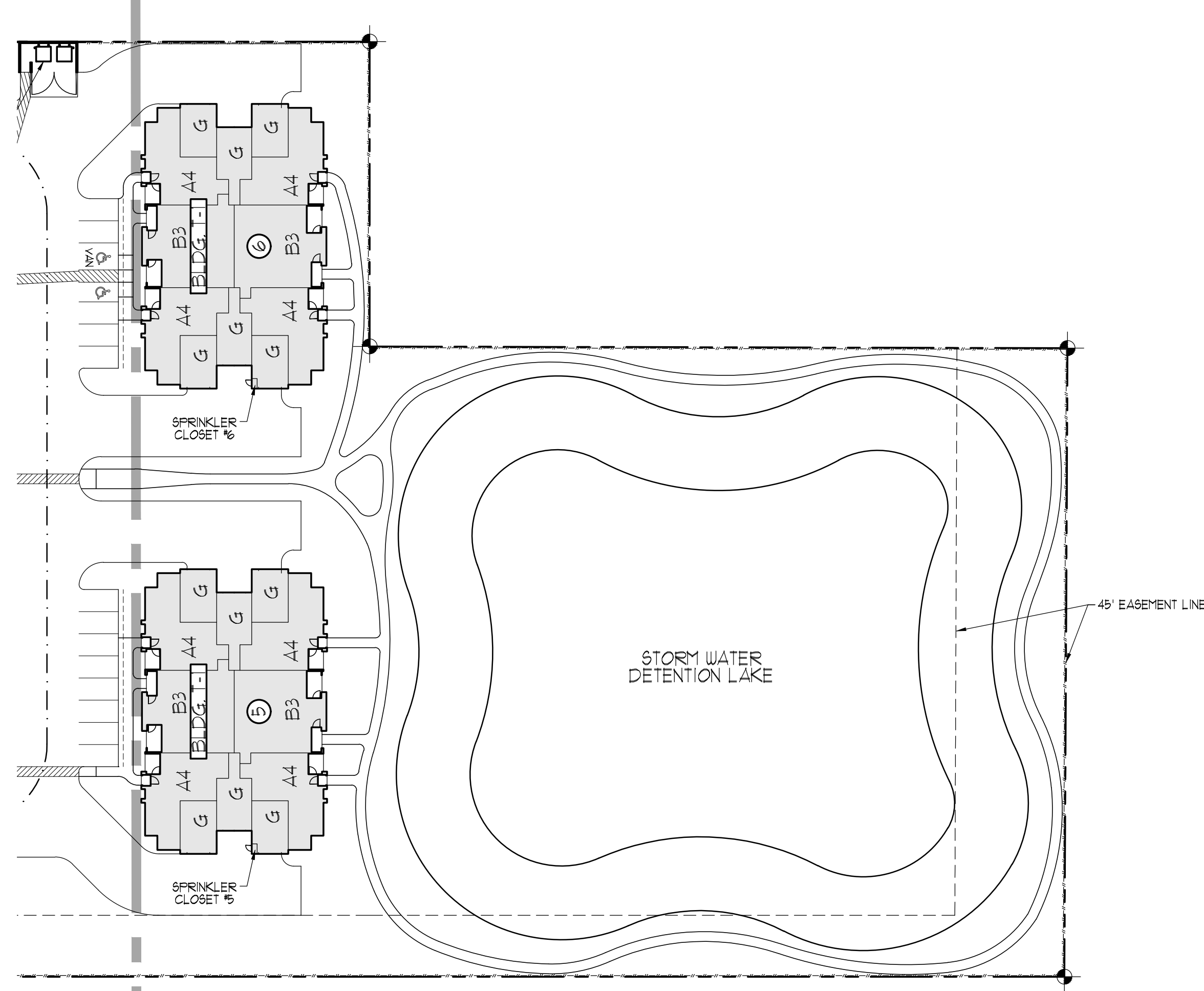
A Senior Citizen Community
Montgomery, Texas
Job No. 1449



1 PARTIAL SITE PLAN
1" = 40'-0"
N



Keyplan



2 PARTIAL SITE PLAN
1" = 40'-0"
N

PROJECT SUMMARY:

Apartments:

Type	Description	Qty	Area
A1	One Bedroom, 1 Bath	12	659 s.f.
A2	One Bedroom, 1 Bath	12	728 s.f.
A3	One Bedroom, 1 Bath	32	706 s.f.
A4	One Bedroom, 1 Bath	16	731 s.f.
A5	One Bedroom, 1 Bath	2	730 s.f.
A6	One Bedroom, 1 Bath	42	820 s.f.
A7	One Bedroom, 1 Bath	4	830 s.f.

Total One Bedroom		120 Units	
B1	Two Bedroom, 2 Bath	16	1084 s.f.
B2	Two Bedroom, 2 Bath	8	1091 s.f.
B3	Two Bedroom, 2 Bath	8	1125 s.f.
B4	Two Bedroom, 2 Bath	18	1150 s.f.

Total Two Bedroom Units		50 Units
Unit Total	170 Units	49,616 s.f.
Amenity Center		2,671 s.f.
Project Total		49,935 s.f.

Parking:

	Total
Parking Required:	
120 One Bedroom Units @ 1.5 Cars =	180 cars
50 Two Bedroom Units @ 2 Cars =	100 cars
10% Add'l Guest =	28 cars
Total Parking Required	308 cars

Total Parking Provided:	Van Accessible		HC Accessible		Total
	Standard	Accessible	Standard	Accessible	
Total Garages	2	1	145	141	147 cars
Total Open Parking (secured)	1	4	134	139	139 cars
Total Open Parking (non-secured)	1	1	10	12	12 cars
Regular Parking Provided	4	5	289	298	298 cars
Additional Tandem Parking	0	0	12	12	12 cars
Total Parking Provided	4	5	361	310	370 cars

CLIENT REVIEW	
Date:	04-29-15, 06-03-15
PRELIMINARY PRICING ISSUE	
Date:	05-11-15
Date:	
Date:	
Date:	
Date:	
Date:	

A1.1

P:\2014 Jobs\1449 Townsen Seniors\1449_A101.dwg, 6/2/2015 5:12:23 PM, DWG To PDF.pc3, 1:1, Peter Ess, Peter Ess